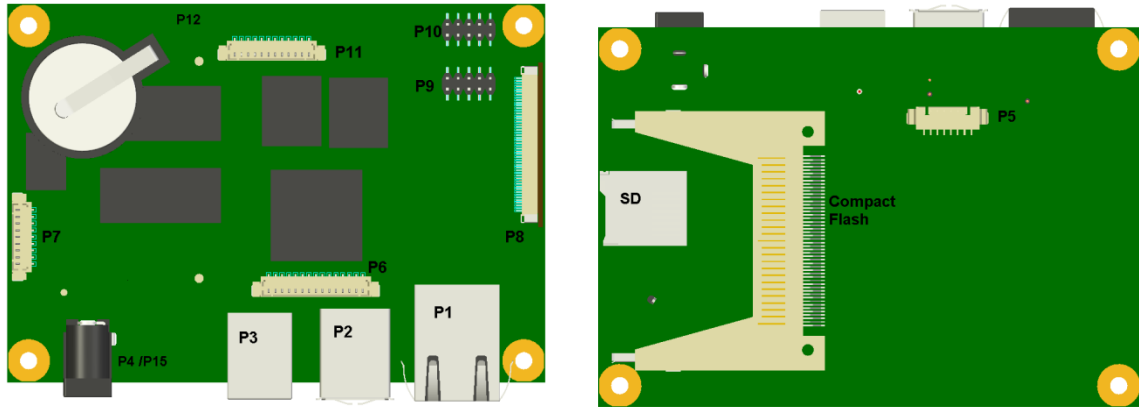


Packing List

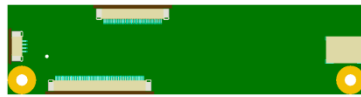
The following parts and accessories may have been supplied by BlueChip Technology, with their mating connections shown below or later in the document



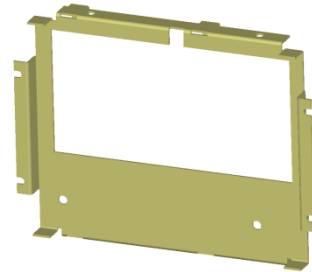
RE1 Connections Top and Bottom



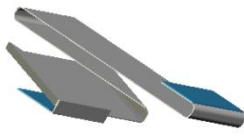
LCD



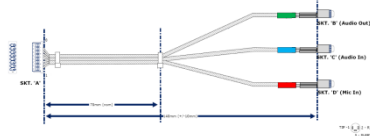
Personality Module



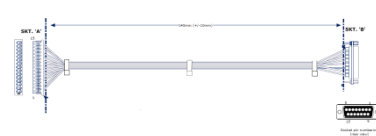
Metal Work



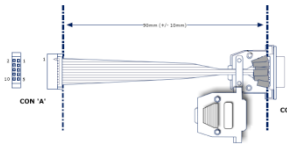
Flat Flexible Cable (FFC) (P8)



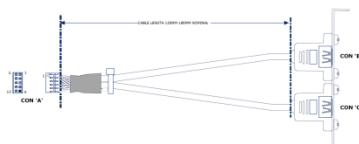
Audio Cable (P5)



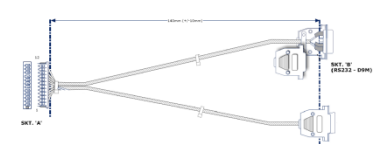
GPIO/I2S Cable (P6)



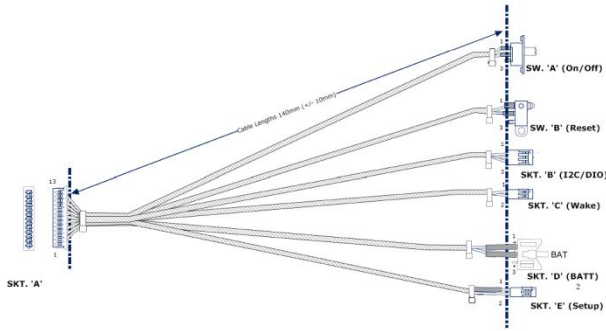
Serial (COM3) (P10)



USB x 2 (P9)



Serial (COM1+2) (P11)



Utility Connector (P7)

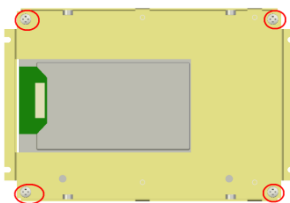
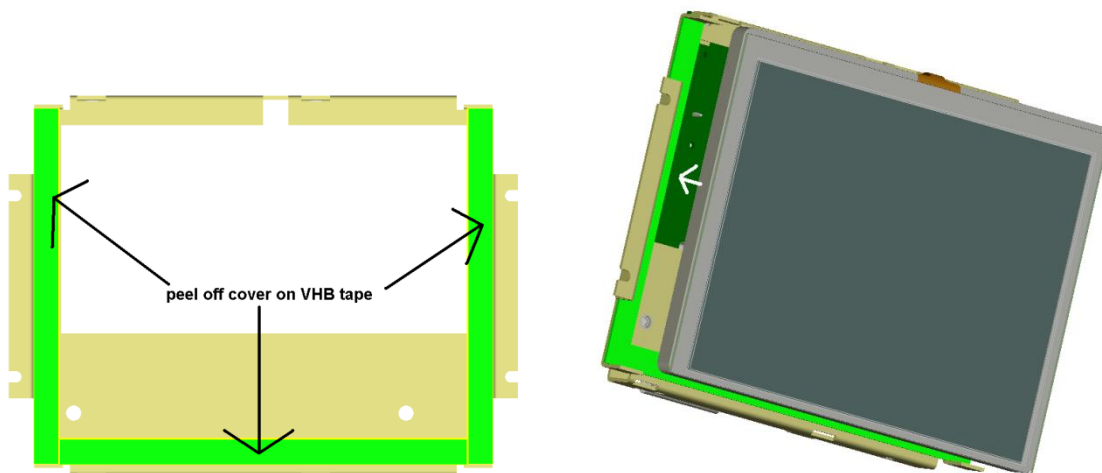
M3x4 POZI/M3x6 SEM/D3x6 POZI

M3 Flange Nut

Assembly Instructions

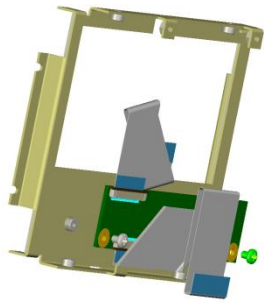
The first step is to fit the LCD to the Metalwork. The UMSH8253, UMSH065, UMSH8173 and UMSH8376 LCD's require to be bonded to the metalwork using the VHB adhesive tape which is already applied to the metalwork. **Before fitting, check that the Electronics all work together, as once fitted it will not be easy to separate the parts**

Peel back the VHB cover paper and carefully align the LCD with the metalwork before pressing together, ensuring that any cables on the LCD are placed through the relevant cut out in the metalwork. Before starting it may also be useful to roughly assemble the components so that you are familiar with how SBC's are aligned and how best to fold the FFC cable(s)



The UMSH044 LCD is attached to the metalwork with 4 D3x6 POZI screws supplied, as shown

After this, attach the Personality module to the back of the metal work as shown

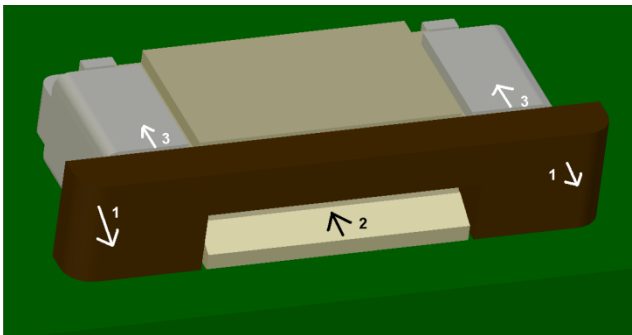


Note to ease fitting, the 50 way FFC cables (connects the Personality Module to the RE1) should be folded and attached to the Personality module before assembly.

The UMSH8065 and UMSH8253 LCD's have a pre fitted FFC which connects to the Personality Module. The UMSH044 (33way) UMSH8376 (40 way) and UMSH8173 (40 way) require an additional FFC in order to connect the LCD to the Personality Module

Use the 2 x M3x4 POZI screws supplied

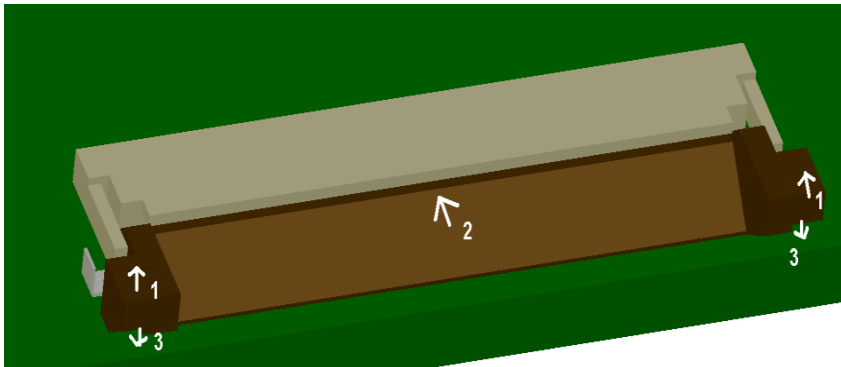
The FFC connectors are small and fragile so great care should be taken when fitting cables. The FFC cables are attached as follows



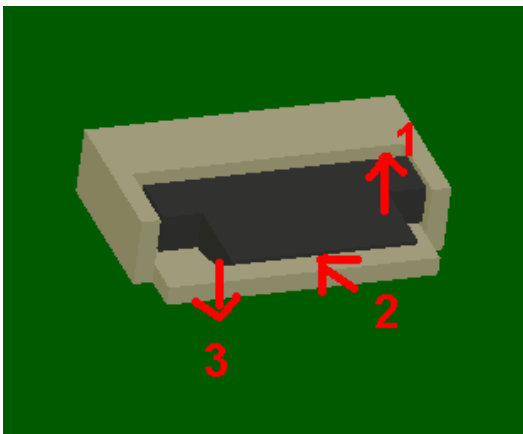
Step 1: carefully ease the brown section forward away from the connector body.

Step 2: insert the FFC cable (exposed connectors side down) as shown

Step 3: push the brown section back to lock the cable in position



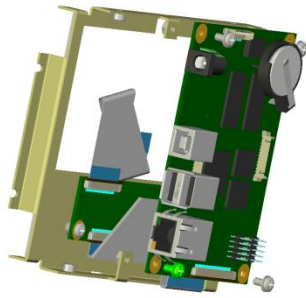
This connector is used with the UMSH134 LCD. Carefully lift the brown tab, and feed the FFC into the connector above this tab – the exposed connections should be upwards. carefully lower the tab again to lock the cable in place.



This small connector is also used with the UMSH134 LCD.

Carefully lift the tab and insert the FFC cable below the tab (exposed connectors side down).

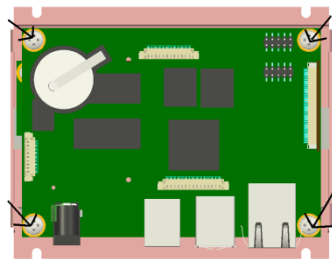
Lower the tab again to lock home



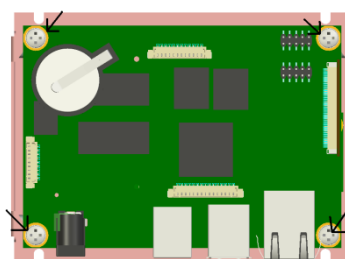
Next, fit the SD card and audio cable, if supplied, and attach the RE1 board to the metal work using the M3 Nut and M3x6 SEM screws to secure in place. All other cables can be attached once the unit has been assembled

Note: Depending on the way the FFC cable has been folded and the orientation of the RE1 board on the rear of the metal work, it may be better to attach the 50 way FFC cable to the RE1 before attaching the board it to the metal work

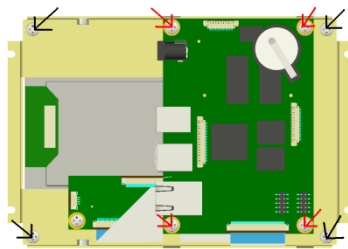
The picture on the left shows the UMSH8376 assembly. The other assembly variants are shown below



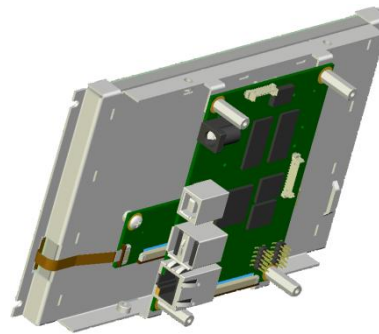
UMSH8253



UMSH065



UMSH044



UMSH8173

Lastly fit the accessory cables as required.

Using the RE1

Once assembled, apply power and the RE1 is ready to go.

If required, the RE1 User Guide provides details on setting up and configuring the RE1. A point to note is that for programming using the Configuration Utility, a standard USB “A to B” cable will be required. This type of cable is available from any PC accessory store