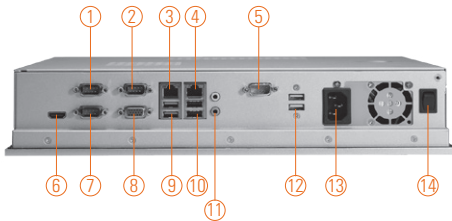
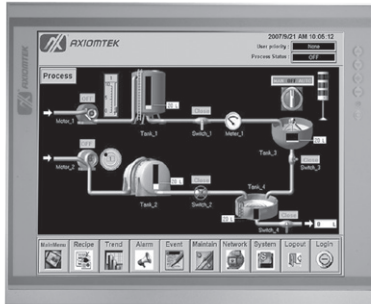


P1157S-881

15" XGA TFT 5th/4th Generation Intel® Core™ i7/i5/i3, Celeron®, Pentium® & Xeon® Processor Processor Slim Industrial Touch Panel Computer

NEW



- | | |
|---|---------------------------------|
| 1. 1 x RS-232/422/485 with 5V & 12V (COM 1) | 8. 1 x VGA |
| 2. 1 x RS-232/422/485 with 5V & 12V (COM 3) | 9. 2 x USB 3.0 |
| 3. 1 x RJ45 for Gigabit Ethernet (LAN 1) | 10. 2 x USB 2.0 |
| 4. 1 x RJ45 for Gigabit Ethernet (LAN 2) | 11. 1 x MIC-in, 1 x Line-out |
| 5. 1 x RS-232 with 5V&12V (COM 4) | 12. 2 x USB 2.0 |
| 6. 1 x HDMI | 13. 1 x AC Plug |
| 7. 1 x RS-232/422/485 with 5V&12V (COM 2) | 14. 1 x switch for power on/off |



Introduction

The P1157S-881 is a multimedia 15" touch panel PC for kiosk application. It has a fashionable mechanism design and industrial-grade material front bezel which can avoid damage from chemical corrosion. To meet the demands of multimedia application, the P1157S-881 is powered by a high performance LGA1150 socket 5th/4th generation Intel® Core™ i7/i5/i3 Celeron® & Pentium® processor with the Intel® H81 Express chipset (Broadwell/Haswell). It features four COM ports, two Gigabit Ethernet and up to 16 GB memory of dual-channel DDR3 that delivers high computing capability for high performance-demanding applications. The industrial panel PC is most suitable for kiosk, factory and automation.

Dual Monitor Display

The P1157S-881 supports VGA or HDMI simultaneously that features the use of dual display devices for increasing the area available for programs running on a single computer system. It not only increases larger screen viewing but also improves personal productivity.

Speaker and WLAN Antenna Supported

The P1157S-881 features built-in speakers for kiosk application to display multimedia content program. It also supports WLAN module antenna (optional) for wireless network connectivity.

Friendly Less Screw Design

Removing the back cover to maintain the system in unscrewing 3 screws only that saving your time and increasing our work efficiency many times.

Features

- 15" XGA TFT LCD display
- LGA1150 socket 5th/4th generation Intel® Core™ i7/i5/i3 Celeron® & Pentium® processor (Broadwell/Haswell)
- Intel® H81 chipset
- Easy installation: a less screw design for user's convenience
- 2 USB 3.0, 4 USB 2.0 and 4 COM ports
- Built-in speakers and optional Wi-Fi 802.11 b/g/n module
- Robust aluminum with IP65 compliant front bezel design
- The best C/P ratio for HMI solution



▲ Side view

Specifications

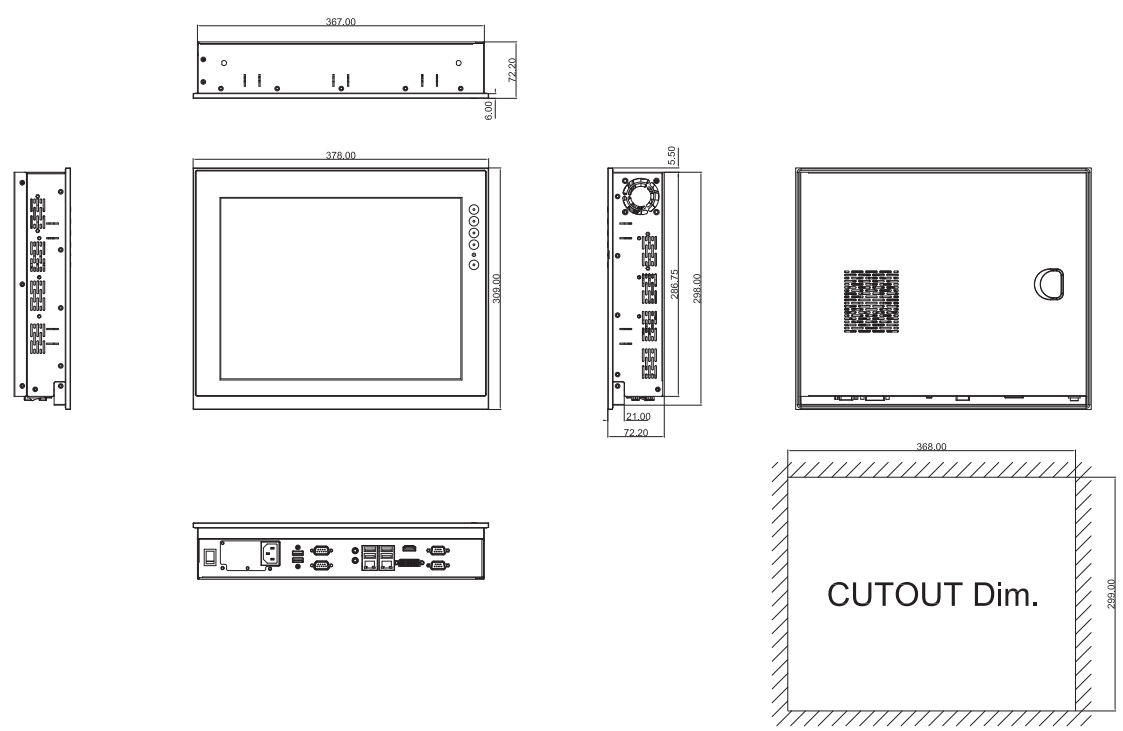
Front Bezel	Aluminum with IP65/NEMA 4 rugged protection	
LCD Panel	Display Type	15" XGA TFT LCD
	Brightness	250 nits
	Resolution	1024 x 768 pixels
	Viewing Angle	160°/140°
Main System	CPU	LGA1150 socket 5th/4th generation Intel® Core™ i7/i5/i3 Celeron® & Pentium® processor (Broadwell/Haswell)
	Chipset	Intel® H81
	System Memory	2 x 204-pin DDR3 SO-DIMM dual channel max. up to 16 GB
	BIOS	AMI UEFI BIOS with OA 3.0 built
	Storage	1 x 3.5" or 2 x 2.5" SATA HDD
	Watchdog Timer	255 levels, 1~255 sec.



Specifications

IO Connector	3 x RS-232/422/485 with 5V & 12V 1 x RS-232 with 5V & 12V 1 x VGA 1 x HDMI 2 x USB 3.0 4 x USB 2.0 2 x 10/100/1000 Mbps Ethernet 1 x Audio (Mic-in/Line-out)
Expansion Interface	N/A
Touchscreen	5-wire resistive type Light transmission 79% 1 million activations (typical) at a single point
Power Supply	100 ~ 240VAC, 200W
Dimensions	378 mm (14.88") (W) x 72.2 mm (2.84") (D) x 309 mm (12.17") (H)
Packing Dimension	610 mm (24.02") (W) x 260 mm (10.24") (D) x 590 mm (23.23") (H)
Weight(net/gross)	5.4 kg (11.88 lb)/ 7.8 kg (17.16 lb)
Environment	Operating Temperature: 0° ~ +45°C (+32°F ~ +113°F) Storage Temperature: -20°C ~ +65°C (-4°F ~ +149°F) Relative humidity: 10 ~ 90%@40°C, non-considering Operating vibration: 1.0 G, 5-500Hz, random
Certificate	CE

Dimensions



Ordering Information

P1157S-881	15" XGA slim industrial touch panel computer supports LGA1150 socket Intel® 4th generation Core™ i7/i5/i3, Pentium® & Celeron® processor, resistive touch screen and 100~240VAC
------------	---

* Specification and certifications are based on options and may vary.

Optional Accessories

82211570050E	VESA & WALL mount kit
82211570060E	Rack mount kit
72211571000E	2 x 2.5" HDD Bracket
E202003330	VM-101 (VESA ARM clamp type)
E202003329	VM-105 (VESA ARM wall-mount)
82211271000E	Wireless LAN kit

Optional OS Installation

Windows® 7/8.1
Windows® Embedded 7/8



▲ Less screw design

Overview

Fanless Touch Panel Computers

Heavy-duty Fanless Touch Panel Computers

3

Industrial Touch Panel Computers

Industrial Touch panel Monitors

Infotainment Touch Panel Computers

Healthcare & Medical Solutions

Open Frame Panel Computers

Accessories